



# Burwardsley Residential

## Year Two

Please take a copy of the Year 2 kit list.  
A copy of this power point is on the website/seesaw!

# Dates & Times

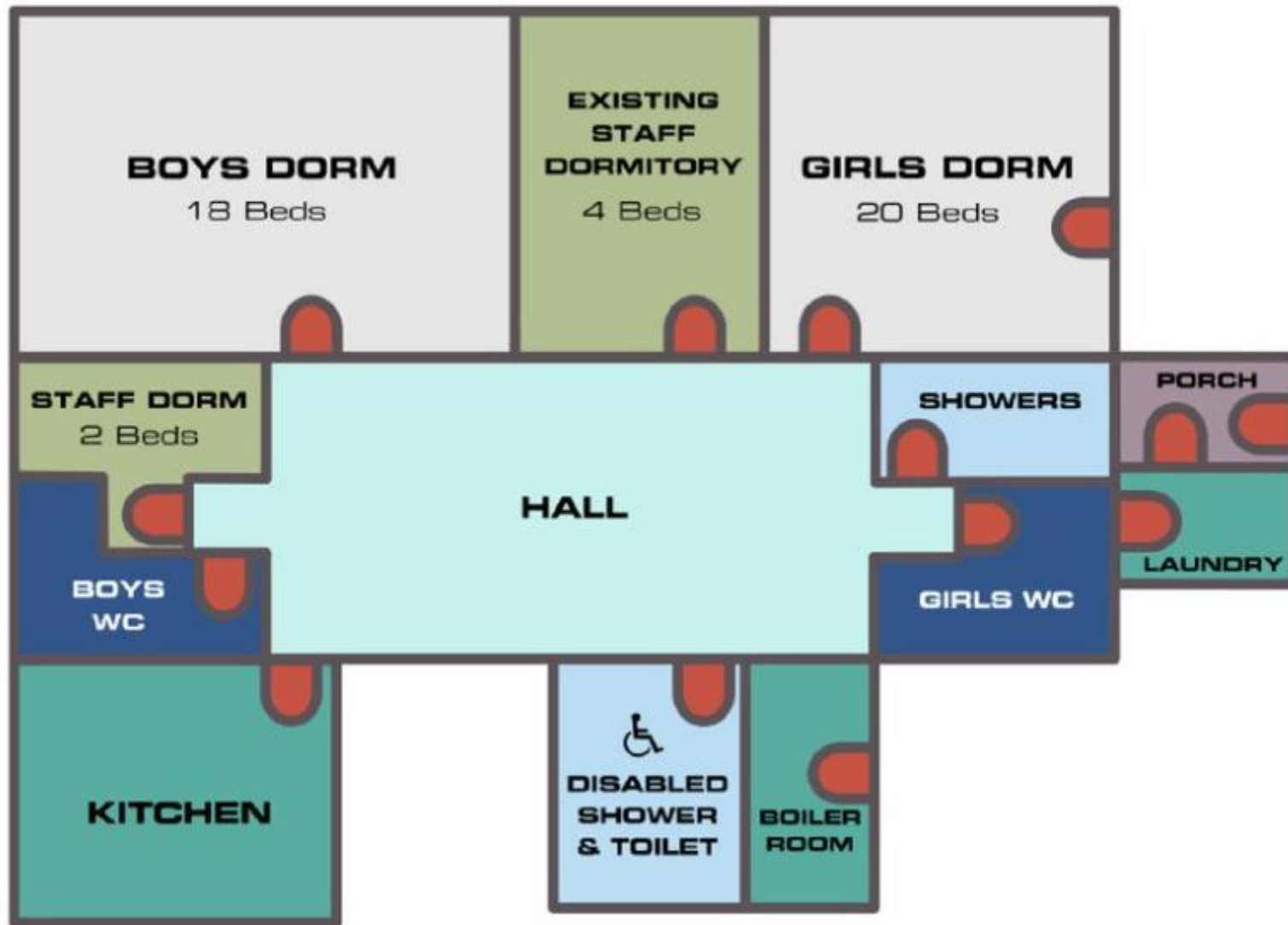


- ▶ Leave school at 10am on Wednesday 1<sup>st</sup> May
- ▶ Come back to school at 2.00pm on Friday 3<sup>rd</sup> May

# Sleeping Arrangement

- ▶ Girl and boys in separate rooms
- ▶ Bunk beds - pre-assigned
- ▶ Staff accommodation in adjoining rooms





# Programme of Activities - Day One

## Morning

- ▶ Coach
- ▶ Arrive at Burwardsley centre
- ▶ Safety briefing and settling in talk - led by Burwardsley Staff
- ▶ Time to explore Burwardsley centre
- ▶ Lunch

## Afternoon/Evening

- ▶ Pond Dipping
- ▶ Dinner
- ▶ DVD
- ▶ Supper
- ▶ Story/Bedtime

# Programme of Activities - Day Two

## Morning

- ▶ Breakfast
- ▶ Guided habitat walk in the local surroundings - led by Burwardsley staff
- ▶ Lunch

## Afternoon/Evening

- ▶ Team games
- ▶ Dinner
- ▶ Campfire
- ▶ Supper
- ▶ Story/bedtime

# Programme of Activities - Day Three

## Morning

- ▶ Breakfast
- ▶ Free play
- ▶ Pack ready for coach
- ▶ Coach
- ▶ Ice-cream factory free play & mini golf

## Afternoon/Evening

- ▶ Lunch
- ▶ Ice-cream!
- ▶ Coach - back to Egerton!

# What to bring

- ▶ See handout
- ▶ Waterproof coat - extra set of clothes in case of rain!
- ▶ Sun cream
- ▶ Allow your child to pack with you!
- ▶ Don't overpack!





# Staying in touch

- ▶ School will be contacted every day by phone
- ▶ Photographs and videos will be uploaded onto Seesaw every day.
- ▶ You will be contacted if needed - illness/emergency



# Staffing

- ▶ Mrs Lowe - Head Teacher
- ▶ Miss Garvey - Year Two Teacher
- ▶ Miss Thorpe - Year Three Teacher
- ▶ Teaching Assistant-TBC
- ▶ Miss Smale- Year 2 Teaching Assistant (days only)

# Catering



## ▶ Breakfast

A selection of cereals, juice and yoghurts are in the dining room for you to help yourselves to, followed by a hot option served at 8.15 am.

## ▶ Lunch

Lunch is sandwiches, crisps, fruit or yoghurt and a hot option which is served at 12.30 pm or a packed lunch which you can take out.

## ▶ Evening Meal

The main meal is a 2 course meal with 2 options usually served at 5:00-5:30pm

## ▶ Snacks

Tea, coffee, squash, milk, hot chocolate, biscuits and toast are available at all times from the dining room.

## ▶ Special Diets

They are a **nut free** centre. They have a wealth of experience in providing meals for all sorts of allergies and intolerances from mild to serious conditions. We ask for dietary requirements on the booking forms but we are also very happy to discuss any special needs with parents or schools and organise a pre-visit meeting if necessary.

# Special Requirements

- ▶ Complete medical form
- ▶ Asthma
- ▶ Allergies
- ▶ Food requirements
- ▶ Night time arrangements - pull ups, reminders, sleeping issues - please speak to a member of staff

# What are the benefits of attending a residential?

**The overwhelming change in children seen by staff is a boost in their confidence and resilience, particularly for those less confident prior to the residential.**

**Staff put this new confidence down to:**

- Being able to try new things in a safe way
- Staying overnight with friends and away from parents; and
- Having to be generally more responsible for themselves and each other.

**After the children have been on residential we notice:**

- They become much more willing to have a go at new activities, transfer skills they learned on the residential; and persevere with harder challenges.
- Their relationships improve, we also notice significant differences after the residential. Friendship's deepen,
  - friendship groups widen and antagonism reduce between those
  - children who don't usually get on. As a result classes can become calmer, learning doesn't get disrupted and
  - playtimes are more fun for everyone.
- Children who also lack confidence prior to the residential are viewed differently by their peers, because if they
  - show skills in areas that others don't have, this new gained
  - appreciation lasts back once the children are in school.



# Burwardsley Residential Year Two - Questions?

*An unforgettable experience!*